

**BECOME A**  
**WASTE**  
**HERO**

**REDUCE TO ZERO**



# What Can You Recycle?

Level 1 Intermediate Lesson






# Lesson Prep & Curriculum Alignment

Prep time: 10 - 15 minutes

Students will learn what kind of items are and are not recyclable. In a hands-on activity, they will work in small groups to sort cards with pictures of common items into recyclables and non-recyclables, practicing their collaborative and critical thinking skills. They will receive a handout to share what they've learned with their family and encourage recycling at home.

- 
- 1** Display or print out the **YES/NO handout** to create a class discussion about items that can and cannot be recycled. **Print 1 deck of sorting cards per number of groups** - before the lesson activity, you can have the students cut out the cards themselves. **Print and pass out the "Coloring Page"** at the end of the lesson or send home as homework.
  - 2** Prepare **2 small empty boxes with an opening at the top to create a recycling and waste bin** for the activity, 1 set of "bins" per group.
  - 3** Display the **Recycling Bin/Non-Recycling Bin slides** for further discussion about why one bin is correct, and the other is not.



# Lesson Prep & Curriculum Alignment

Prep time: 10 - 15 minutes

## Key Learning Outcomes and Curriculum Alignment:

- **Science - Earth and Human Activity:** Communicate solutions that will reduce the impact of humans on the land, water, air, and/or other living things in the local environment. Things that people do can affect the world around them. But they can make choices that reduce their impacts on the land, water, air, and other living things.
- **Social Studies - People, Places, and Environments:** Students study people, places, and environments and enables them to understand the relationship between human populations and the physical world.
- **English Language Arts and Literacy:** Able to ask and answer questions about details in a literature text. Participate in collaborative conversations with diverse partners about topics and texts. Follow agreed-upon rules for discussions. Use words and phrases acquired through conversations, reading and being read to, and responding to texts.

## SDG Alignment



## Flexible and adaptive lesson

Lesson plans are designed to be flexible and responsive to the evolving needs of your classroom. Lessons are editable and customizable to meet the different individual student and classroom contexts. A PowerPoint version with teacher instructions and a printable PDF lesson are available for download.

# The Lesson

Lesson duration: 45 - 60 minutes

1

**Introduce the lesson with a discussion** of what students already know about recycling. **Print or display YES/NO handout.**

- What is recycling?
- Why do we recycle?
- What kinds of things do you think can be recycled?
- Are there things that cannot be recycled?
- What things should not be put in the recycling bin?
- What are the “1-2-3’s” of recycling?

- Ask the students to get out their YES/NO handout.
- Show Recycling Bin / Non-Recycling Bin slides and ask why is one bad and one good? Allow them to look and identify reasons for each picture based on their YES/NO handout.

2

**Tell your students they are going to play a recycling “Fill The Right Bin” sorting game.**

- Divide them into groups and give each group one recycling box and one waste box you created and a shuffled deck of cards containing pictures of common recyclable and non-recyclable items. Have your students work as a group to decide which items are recyclable, and which are not.

When groups are done sorting the cards, they should put the ones showing recyclable items into their recycling box.

3

**A whole-class activity.**

- Review the cards in each group’s recycling box. If any items were incorrectly identified as recyclable, explain why, or ask if any student knows why and have them explain. It may also be easier to write the correct answers on the board and have the groups check themselves. Confirm that students understand why an item is recyclable or non-recyclable. See the next page for an alternate version of the recycling sorting game.



# The Lesson

Lesson duration: 45 - 60 minutes

## Alternative Version

**1** Divide your students into 2 or 3 relay teams and have team members line up one behind the other.

- On the opposite side of the room, designate a “recyclable” bin and a “non-recyclable” bin for each team.

**2** Distribute one deck of shuffled cards per team evenly among the team members.

- Explain how a relay works and that when it is their turn, each student on the team should cross the room and place a card into which space (“recyclable” or “non-recyclable”) they think it belongs in and get back to their team as quickly as possible for the next team member to take a turn.

You may want to put a twist on it – and keep things safe – by telling students they must hop or skip across the room rather than running.

**3** When a designated amount of time is up or the first team has finished, the team with the most correctly identified cards wins.

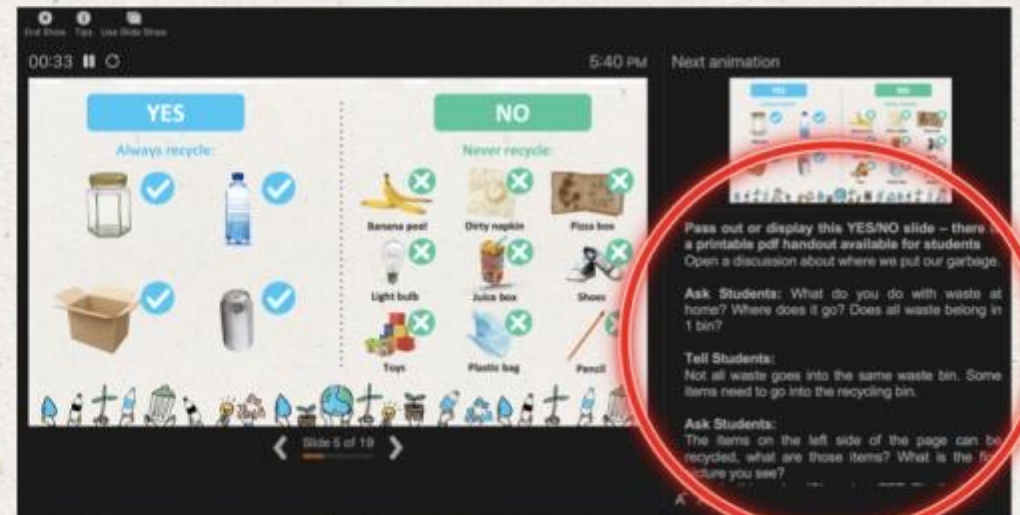


# Prepare the PowerPoint presentation

When you are ready to present the lessons to your class click on **Slide Show** on the top menu bar then select **Presenter View**. In Presenter view, you can see your notes as you present while the audience see only your slides.



The notes appear in a pane on the right. The text should wrap automatically, and a vertical scroll bar appears if necessary. You can also change the size of the text in the Notes pane by using the two buttons at the lower left corner of the Notes pane.







Glass jar



PET Plastic bottle



Shoes



Metal can



Light bulb



Juice box



Dirty napkin



Pencil



Plastic bag



Toys



Cardboard box



Garden hose



Banana peel

YES

NO





# YES

Always recycle:



Glass jar



PET Plastic bottle



Cardboard box



Metal can

# NO

Never recycle:



Banana peel



Dirty napkin



Garden hose



Light bulb



Juice box



Shoes



Toys



Plastic bag



Pencil





# Recycling bin



**Clean**



**Dry**



**No smell**



**No plastic bags**



**No non-recyclables**





# Non-recycling bin



- ✘ Food
- ✘ Dirty or wet paper and cardboard
- ✘ Liquid in bottles
- ✘ Dirty cups
- ✘ Plastic bags





# The

# 3

# Steps to Recycling





# Step 1 Know what you can recycle.



**Glass Jar**



**PET Plastic bottle**



**Cardboard box**



**Metal can**





# Step 2 Empty, clean, and dry before putting in the bin.



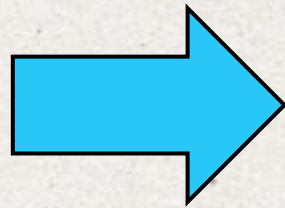


# Step 3 Put recyclables into the correct recycling bin.





When we clean, dry, and recycle we can make new things.



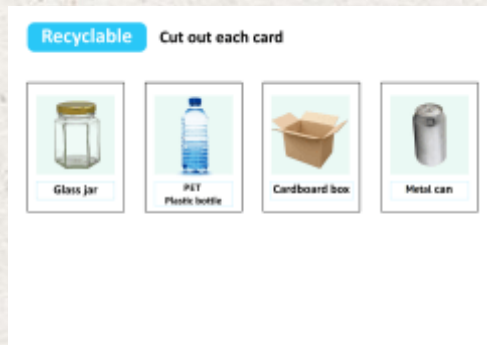


# Next Steps

1

**Tell your students they are going to play a recycling “Fill The Right Bin” sorting game.**

- Divide them into groups and give each group one “recycling box” (a shoebox works) and one “waste box” you created and distribute the deck of card handouts containing pictures of common recyclable and non-recyclable items for them to cut out.
- **Have students cut out the cards in their groups.**
- Have your students work as a group to decide which items are recyclable, and which are not.



2

**Print and pass out the “Coloring Page”** at the end of the lesson or send home as homework.

The coloring page is separate from the PowerPoint lesson and is a downloadable pdf file.

RECYCLE BIN

