

BECOME A WASTE HERO

REDUCE TO ZERO



Waste Leakage in the Environment


Level 3 Beginner Lesson



Lesson Prep & Curriculum Alignment

Prep time: 10 – 15 minutes

Students will review and refresh their knowledge of recycling and the negative effects on the environment without recycling best practices. They will also be introduced to the concept of “waste leakage” as a result of not recycling and mismanagement of recyclables. They will work in small groups or individually to create a “Waste Hero” character and design a poster that will be used to convey a PSA (Public Service Announcement) message to inform, inspire, and encourage recycling at school. Students will receive a handout to create their character, then design their PSA poster and place the message around the school.

- 
- 1** Display the lesson slides for the class and create a discussion about what they already know about recycling and introduce the concept of waste leakage and ocean bound waste. Ask students the guiding questions in the PowerPoint slide notes.
 - 2** Print out the “YES/NO” handout and the “Create Your Waste Hero” handout. Gather all kinds of art supplies and posterboards or A3 size paper (1 per group or per student).

Lesson Prep & Curriculum Alignment

Prep time: 10 – 15 minutes

Key Learning Outcomes and Curriculum Alignment:

- **Science - Earth and Human Activity:** Communicate solutions that will reduce the impact of humans on the land, water, air, and/or other living things in the local environment. Things that people do can affect the world around them. But they can make choices that reduce their impacts on the land, water, air, and other living things.
- **English Language Arts and Literacy:** Participate in collaborative conversations with diverse partners about topics and texts. Follow agreed-upon rules for discussions. Use words and phrases acquired through conversations, reading and being read to, and responding to texts.

SDG Alignment



Flexible and adaptive lesson

Lesson plans are designed to be flexible and responsive to the evolving needs of your classroom. Lessons are editable and customizable to meet the different individual student and classroom contexts. A PowerPoint version with teacher instructions and a printable PDF lesson are available for download.

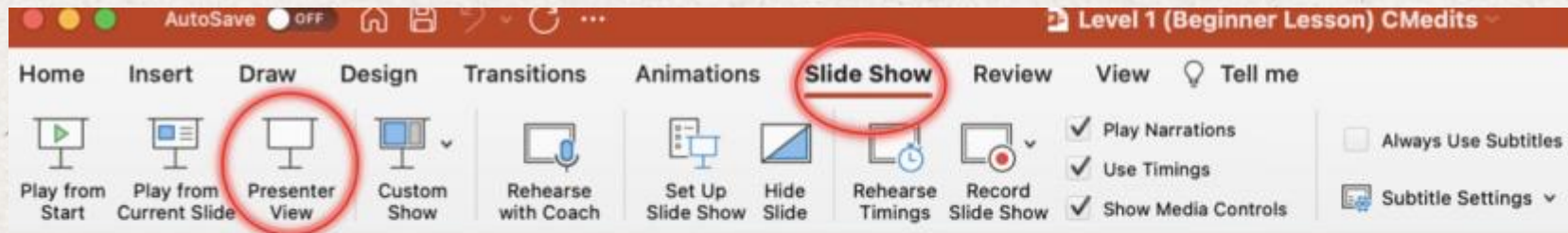
The Lesson

Lesson duration: 45 - 60 minutes

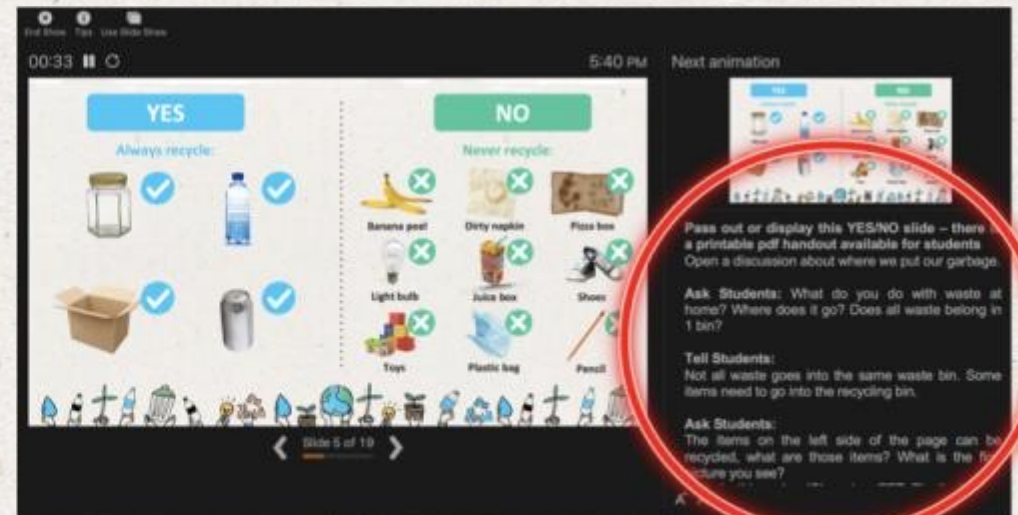
- 1** **Introduce the lesson to your students by asking about their knowledge of what can and cannot be recycled and do the icebreaker exercise. Display the “YES/NO” slide or print the handout as a reference.**
 - Create an open discussion about the basics of recycling.
 - Do you recycle?
 - What can be recycled?
 - What cannot be recycled?
 - Ask for them to give a few examples of each.
- 2** **Introduce the concept of waste leakage and create a discussion about how our waste can enter the ocean, even if we do not live by the ocean.** Display the slides explaining how waste enters our oceans from land.
- 3** **Let students know they will create a “Waste Hero” superhero, and a posterboard PSA (Public Service Announcement) to be hung up at their school.** Break into groups or work independently to create a school PSA (Public Service Announcement) message to inspire and empower people to recycle at school.

Prepare the PowerPoint presentation

When you are ready to present the lessons to your class click on **Slide Show** on the top menu bar then select **Presenter View**. In Presenter view, you can see your notes as you present while the audience see only your slides.



The notes appear in a pane on the right. The text should wrap automatically, and a vertical scroll bar appears if necessary. You can also change the size of the text in the Notes pane by using the two buttons at the lower left corner of the Notes pane.





Glass jar



PET Plastic bottle



Shoes



Metal can



Light bulb



Juice box



Dirty napkin



Pencil



Plastic bag



Toys



Cardboard box



Garden hose



Banana peel

YES

NO



YES

Always recycle:



Glass jar



PET Plastic bottle



Cardboard box



Metal can

NO

Never recycle:



Banana peel



Dirty napkin



Garden hose



Light bulb



Juice box



Shoes



Toys



Plastic bag



Pencil



Ocean Waste



© Troy Mayne / WWF



Nea

stic

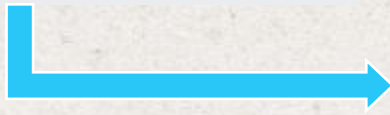
waste.



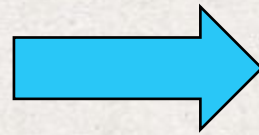
How does waste
enter the ocean?



Waste leakage is when **our waste does not get recycled or enter a landfill and leaks** into our natural environment.



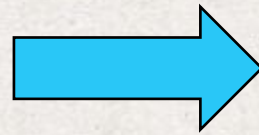
1. People leave waste on the ground or it falls from a trash bin.



2. When it rains waste flows into storm drains.



3. The storm drain feeds into local waterways.



4. Those waterways then feed into local rivers.



5. Rivers flow into the ocean.



6. Ocean currents send waste around the world and create "waste islands".



How do we prevent ocean waste?



Practice The 3 Steps to Recycling

1 Know what you can recycle



2 Empty, clean, and dry before putting in the bin.



3 Put recyclables into the correct recycling bin.



Recycling Tips we can share to inspire others to recycle.

Find the #1 on the bottom of plastic bottles and recycle it. #1 PET plastic bottles are fully recyclable.



Recycle items into the correct recycling bin where you see the recycling symbol.



Recycling Tips we can share to inspire others to recycle.

Do not put food in the recycling bin.
Wet and dirty recycling items cannot be collected.



Use less single use materials like plastic bags and plastic straws we only use one time.



Create a "Waste Hero" Superhero and a "Call to Action" Poster



How to create your “Waste Hero” PSA for your school.

Steps

1

Identify your audience. Who will see your poster at school?



Steps

2

Create your “Waste Hero” superhero. “Recycle Man or Bottle Woman?”



Steps

3

Create your message about why we need to recycle (Problem & Recycling Tip).



Steps

4

Identify where to post the posterboard PSA message at school to inspire others to recycle.



Create your



<p>What superhero, person, or character inspired your Waste Hero?</p>	<p>What is your Waste Hero's name?</p>
<p>What is your Waste Hero's superpower?</p>	<p>What are 3 words to describe your Waste Hero?</p>
<p>What environmental problem does your Waste Hero address?</p>	
<p>What is your Waste Hero's message to inspire recycling best practices and encourage others to take action?</p>	

Draw / Sketch your character.

A large, empty rectangular box with a black border, intended for drawing or sketching the character created by the user.



WASTE WOMAN



Waste Woman

Waste woman's power is to make waste disappear and leave oceans, rivers and land back to their full natural glory. - If only the world had some one like her!



Litter is a huge problem in our oceans and there is no simple way to fix it. There is so much rubbish in our seas it would take the whole world to help fix our problem. Off the coast of South America there is a massive garbage patch called twice the size of Texas!

"Cherish the natural world because you're a part of it and you depend on it"
- David Attenborough



52% of fish eat plastic and when we eat them in turn, we are eating plastic

you can be a hero to,
just pick up your
Litter



Put the right
Litter in the
bin!! Do you want
this?!